

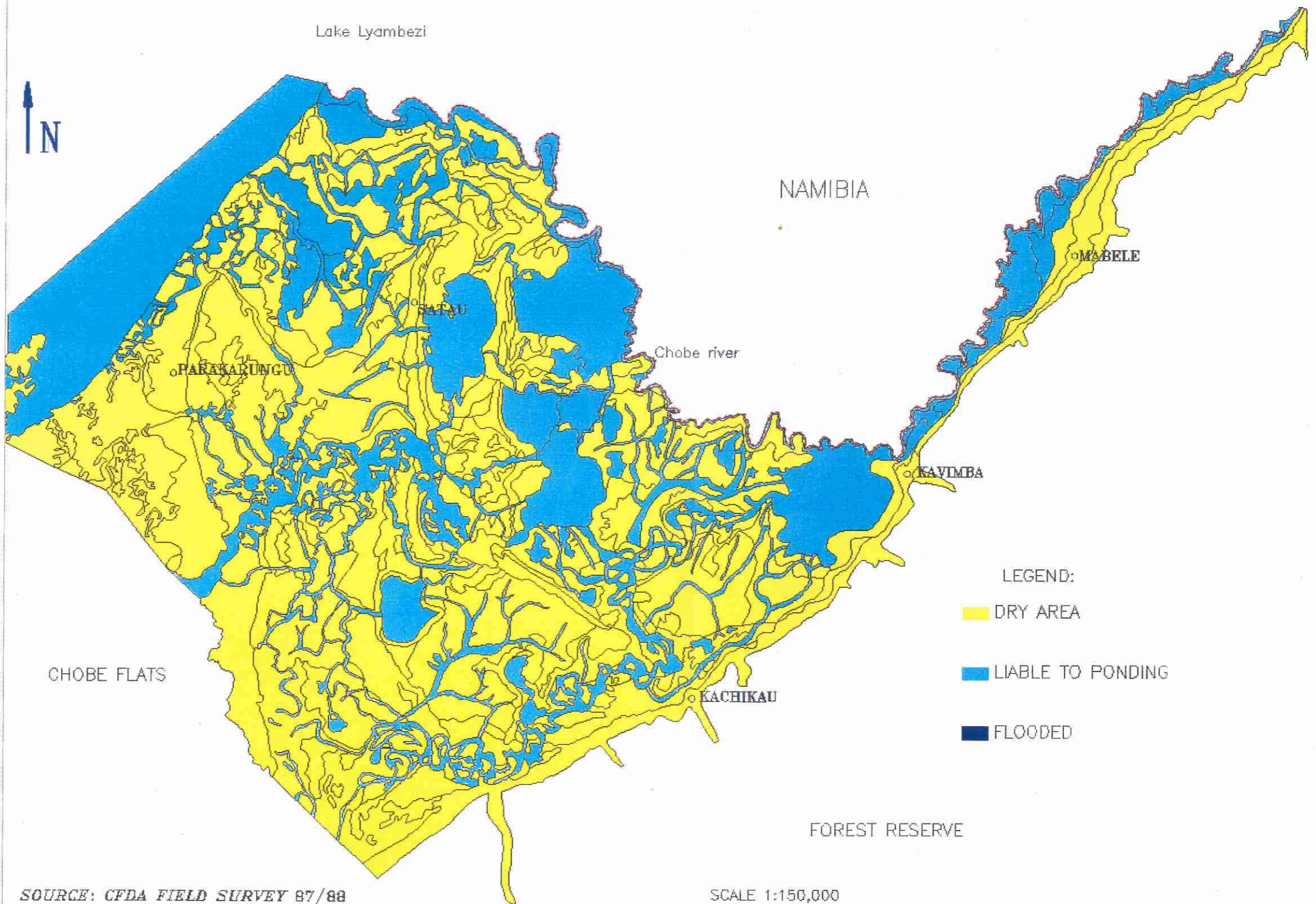
these units
y tolerant
The F3.
olerant to
nding risk
ow oxygen

scenarios
different
y the most
ion model
tion of a
ross CO₂
lation and
s can be
ther than
that the
quirements
groundwater
o be free
erefore a
er stress
potential
eoretical
the water
ial crop
the 4500

ted years
based on
a) data.
a lower
with 900
wet. Real
ion, see
on base
ble soil
ion will
statistics,

imal and
ure were
capacity
oincides
the crop
e water
biomass
of water

SITUATION FOR DRY SCENARIO



SOURCE: CFDA FIELD SURVEY 87/88

SCALE 1:150,000