

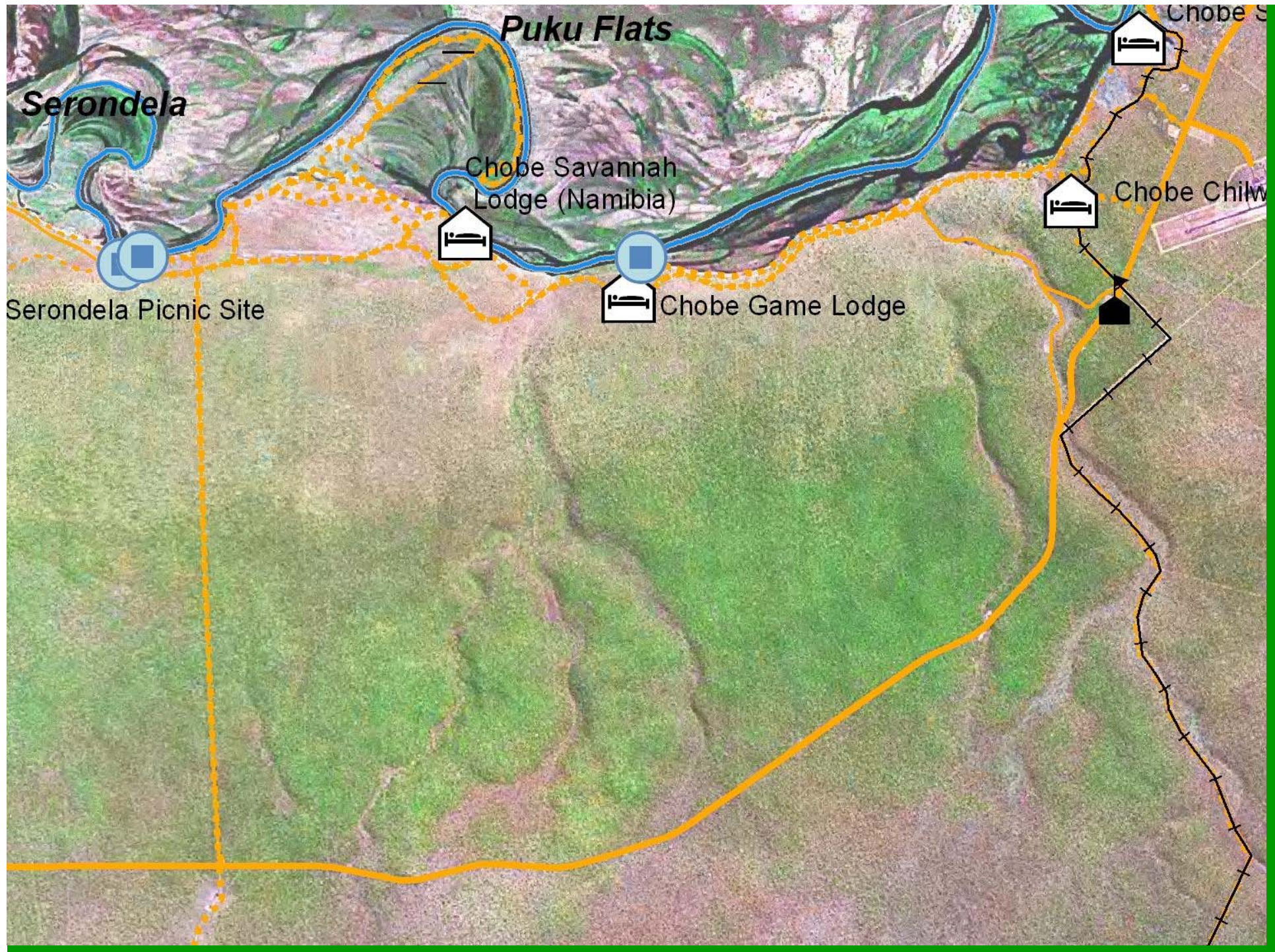


CHOBÉ RIVER FRONT



DECONGESTION STRATEGY

DWNP





INTRODUCTION

A number of solutions identified to resolve the Chobe Riverfront traffic congestion are as follows:

- 1. Three game viewing routes in one way direction**
- 2. Construction of Waterholes and Observation Hides**
- 3. Directional Signs**
- 4. Regular patrols**
- 5. Discipline during game viewing**
- 6. New fee schedule**



ONE WAY GAME VIEWING ROUTES

The following have been identified as possible one way route

- 1. Riverbank route from Sedudu to Serondela (**
- 2. The upper route**
- 3. Nantanga route**

Each route should be used by 25 vehicles at any given time and thus a total of 75 vehicles per session





ONE WAY GAME VIEWING ROUTES CONTINUED

- Allocation of vehicle slots per company per route by 30th April 2009 and this will be guided by number of visitors contributed by each company for over the past 5 years.
- Color coded tokens will be used to identify vehicles along the routes.

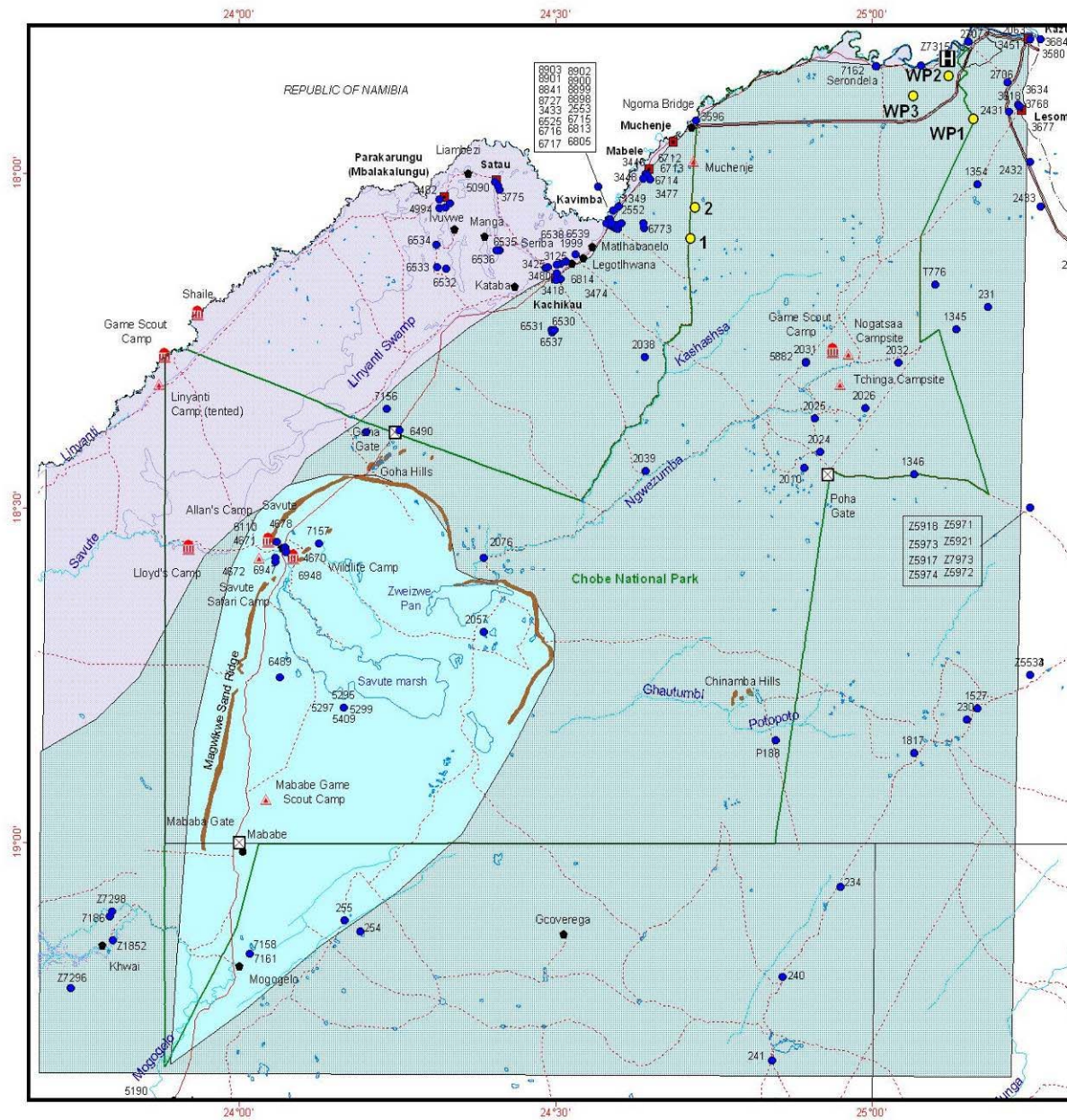




WATERHOLES

- Introduce 3 new water holes at natural water points as per attached/overleaf map to augment water supply and divert wildlife to new routes.
- WP 1 and 3 involve drilling of new boreholes while water to WP 2 will be drawn from the river





LEGEND

- Village
 - Settlement
 - RAD Settlement
 - Borehole
 - Selected borehole site
 - International boundary
 - Administrative boundary
 - Tarred Road
 - Gravel Road
 - Track
 - Sand ridge or hill
 - ▲ Camping / tent facilities
 - Gate
 - Chobe National Park Headquarters
 - ~ River
 - National park
 - Pan
 - Swamp
- General groundwater Potential
- Moderate to high yields of 50-100m³/hr, generally brackish
 - Low yields of 3 to 18 m³/hr, generally fresh groundwater
 - Low yields of < 5m³/hr, fresh to saline



Ministry of Environment, Wildlife and Tourism
Department of Wildlife and National Parks

**Artificial Watering Points Project
Chobe National Park**






OBSERVATION HIDES

Two observation hides will be constructed to improve game viewing





DIRECTIONAL SIGNS

- Signage will be erected by the 30th June 2009 at all the 7 entrance and 9 exit points of these routes to guide visitors on the directions to be undertaken





REGULAR PATROLS

- A total of 10 officers and 3 vehicles is required to adequately patrol these routes

These patrols would be carried out early in the morning and late afternoon





DISCIPLINE

- All operators will be allowed only 5 vehicles per sighting
- Each of the vehicles should stay no more than 5 minutes
- To be incorporated in DWNP Parks Regulations by Sept. 2009.
- Need to incorporate it in the industry's code of conduct
- Implementation by April 2009.





THE NEW FEE SCHEDULE

- Approval and subsequent implementation of proposed fee schedules should be done by the end of December 2009.
- This will limit the industry in utilizing the riverfront routes





PROGRESS



MAIN ACTIVITIES TO BE IMPLEMENTED

Implementation of:

1. Professional Guides Code of Conduct (Discipline)
2. Construction of waterpoints
3. One way direction routes & booking system
4. Directional Signs
5. Regular Patrols
6. New fee schedule (Revision of Park fees)
7. Use of 4-stroke engine
8. Closure of White Sands



Code of Conduct for Professional Guides

- Became effective on 1st October 2009;

- Addresses discipline in:
 - GAME DRIVES
 - BOAT CRUISES



GAME DRIVES

- Entry at designated entry points where all vehicles should be registered and filled clients' registration forms deposited
- Following distance of 300-500m be kept between vehicles.
- Speed limit is 40 km/h
- A max. of 4 vehicles per sighting and no vehicle should spend more than 5 min at a sighting.



GAME DRIVES cont'

- Vehicles should be parked in such a manner that other vehicles can pass without passing between the guests and a sighting.
- No off-road driving. Parking should be parked with two side-wheels on the road and the other two side-wheels off-road to avoid blocking and off-road driving by other guides.
- Minimize disturbance to animals and avoid willful obstruction to other park users.
- No guide should inform another of a sighting through a mobile device, radios and/or cell phones are for emergency purposes only.
- Respect the animals' living space; do not go too close to animals!



BOAT CRUISES

- Entry into the park be via the Jetty Point where boats should be registered and clients' registration form deposited
- Only four stroke engine boats or better shall be used to transport clients
- Speed limit is 15 km/h
- There should be no more than 4 boats at a sighting and a total time spent at a sighting should not exceed 5 min.



BOAT CRUISES cont'

- Maintain a distance of at least 50m between a boat and the following:
 - Animals such as hippos or crossing elephants
 - Birds and crocodile nesting sites
 - Skimmer Island

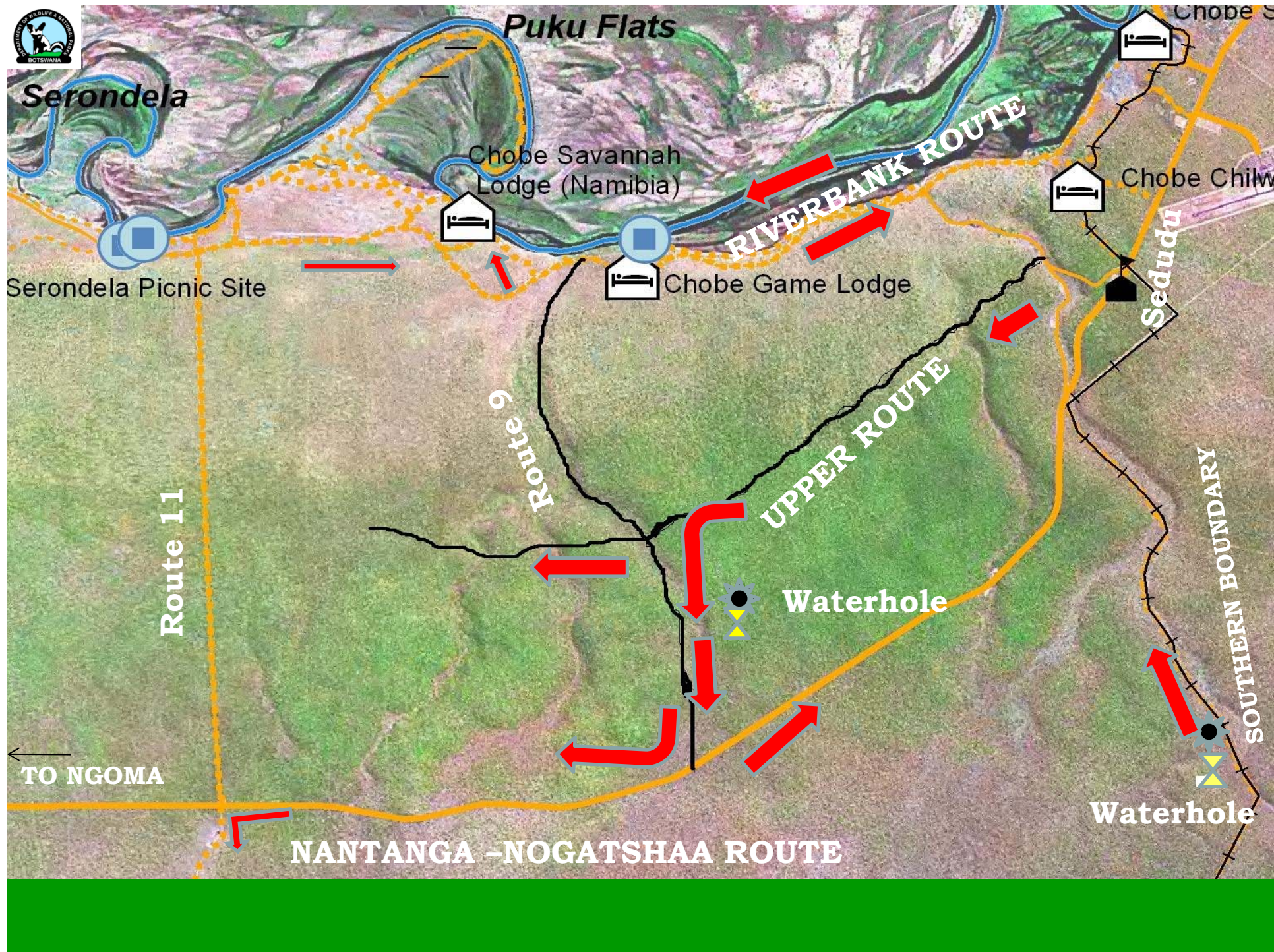
- Maintain a distance of at least 20m between a boat and the following:
 - The river banks
 - Island edges

- Only boats of a capacity approved by DWNP shall enter the Park.



WATERPOINTS

- Four boreholes have been drilled and equipped
- Drilling was completed in February 2010;
- Equipping and construction of watering/drinking points started in July 2010 and completed in early October 2010.



Serondela

Puku Flats

Chobe Savannah Lodge (Namibia)

RIVERBANK ROUTE

Chobe Chilw

Serondela Picnic Site

Chobe Game Lodge

Sedudu

Route 11

Route 6

UPPER ROUTE

Waterhole

SOUTHERN BOUNDARY

Waterhole

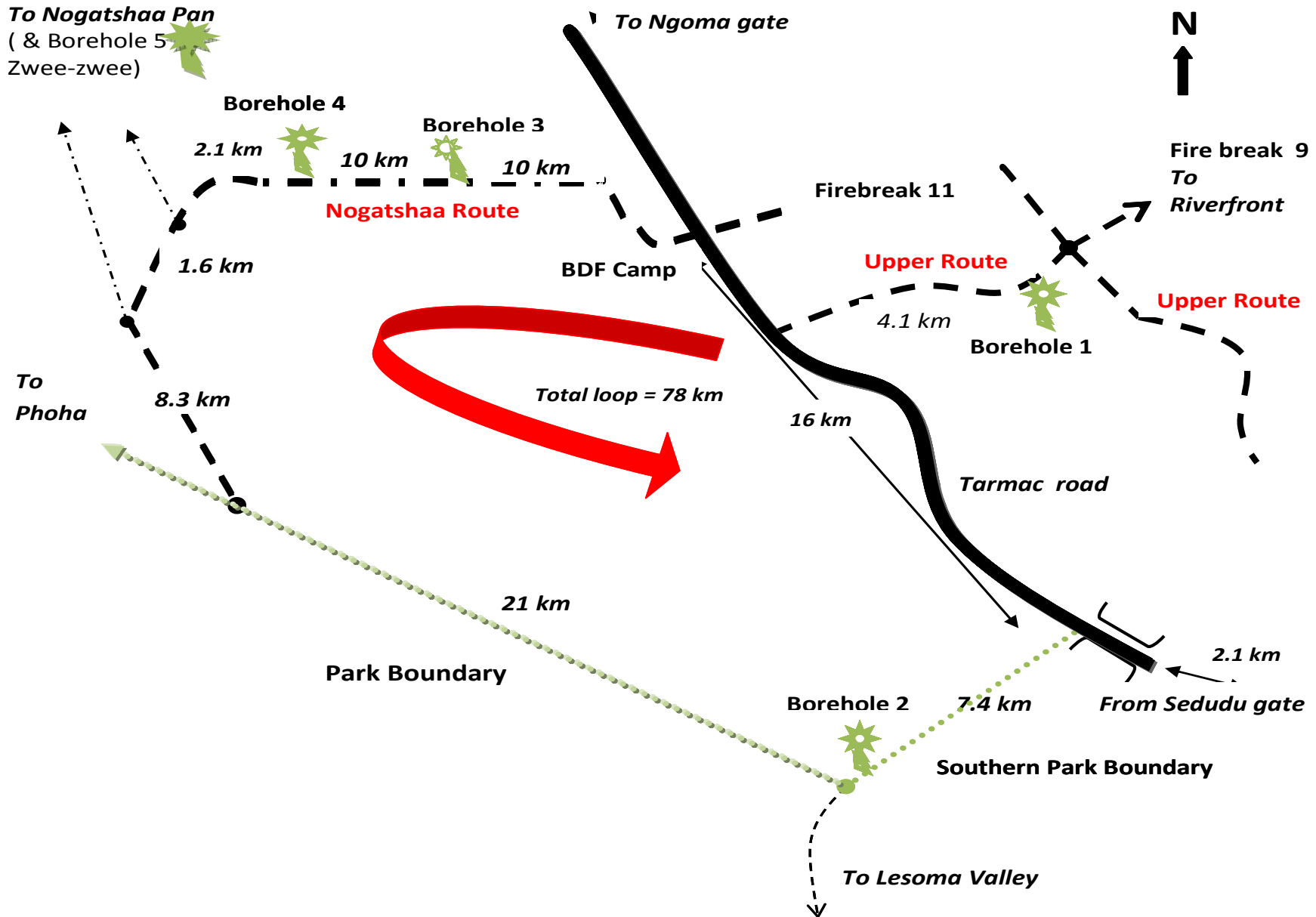
TO NGOMA

NANTANGA - NOGATSHAA ROUTE



Waterpoints south of Ngoma Road

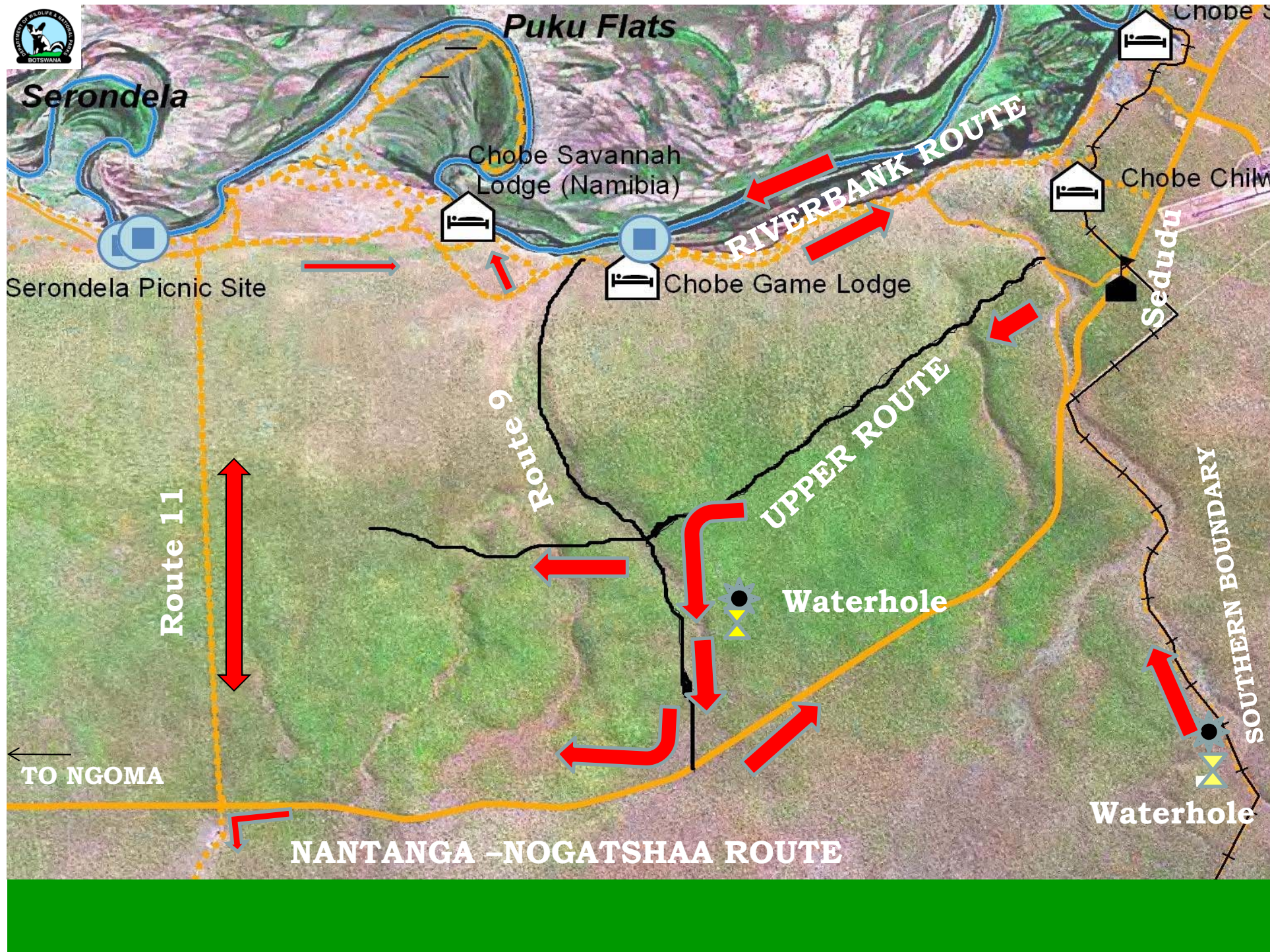
Sketch map of Borehole Distribution within Chobe Riverfront Decongestion Strategy





One way route and booking system

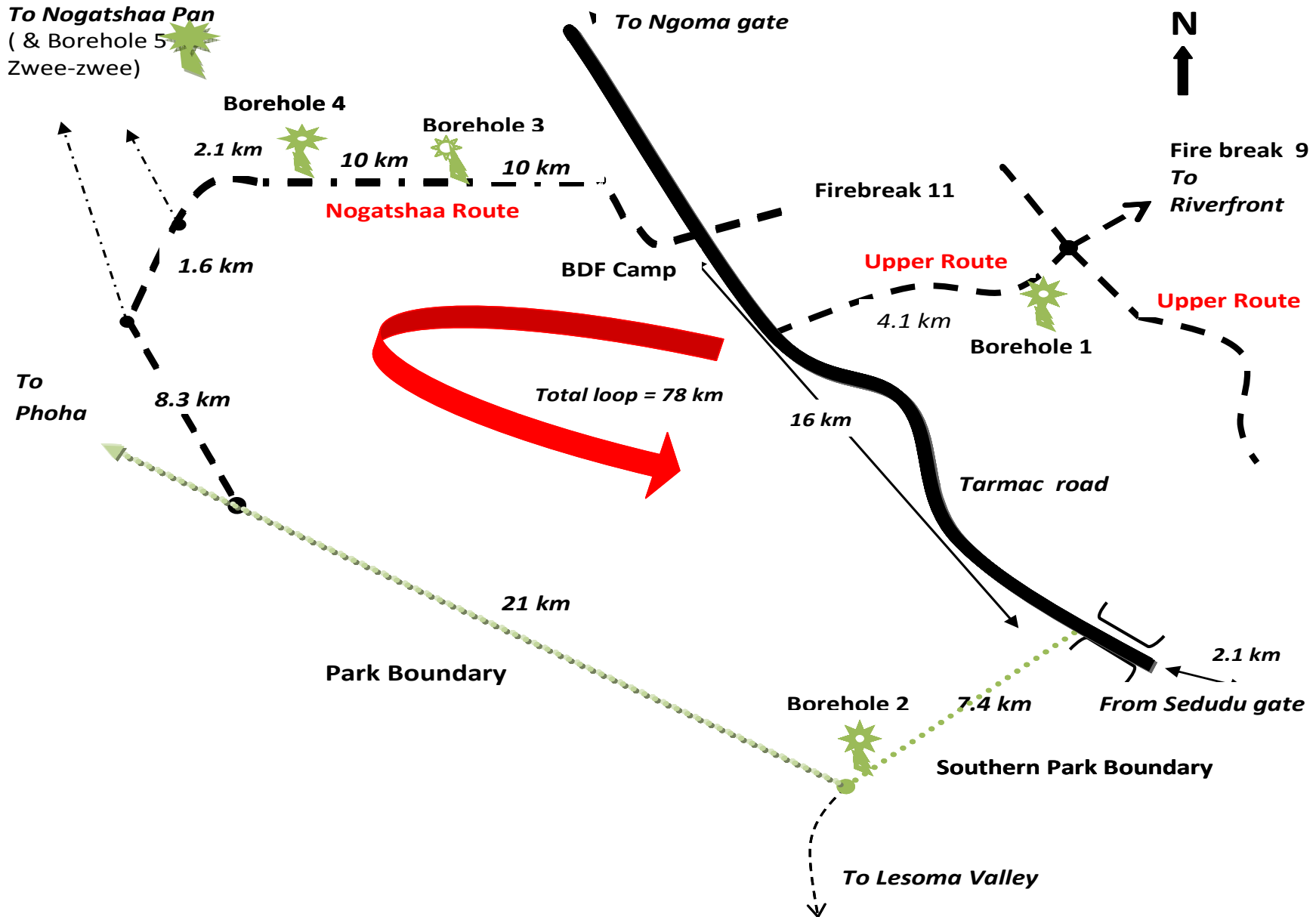
- One-way route system to come into use on 01 December 2010 (deferred because of an appeal from pvt sector).
- To be implemented in Riverbank route and Upper Route;
- Implementation in Nogatshaa route to wait for the input of LACOM (due 08 December 2010)





Waterpoints south of Ngoma Road

Sketch map of Borehole Distribution within Chobe Riverfront Decongestion Strategy





BOOKING SYSTEM

- ❑ To effect on 01 January 2011.
- ❑ Color-coded tokens (e.g green, yellow) will be provided & each route to have its own color code.
- ❑ Each route will be allotted a max. of 25 vehicles
- ❑ Game viewing divided into 3 sessions a day:
 - Morning: 0530/0600-0930h
 - Mid-day: 1000-1430h (Self drives/Day trippers)
 - Afternoon: 1430-1800/1830



BOOKING SYSTEM CONT'

- No company will be allowed to book one route more than once in a day *(i.e a company using riverbank in the morning will not be allowed to use it again in the afternoon, unless there is space)*
- Bookings to be done 1 week in advance via Sedudu office phone (exclusively for bookings). Computerised system to be introduced later.
- Confirmation to be done within 24 hours of booking



OTHER ACTIVITIES

- 1. Directional Signs - Complete**
- 2. Patrols - Weekly patrols are done**
- 3. New fee schedule - Revision of Park fees at advanced stage**
- 4. Use of 4-stroke engine – Effected on 1 March 2010**
- 5. Closure of White Sands - Effected on 01 December 2009**



THANK YOU